

## 611019-X HAND OPERATED OIL DISPENSING SYSTEM



**READ THIS MANUAL CAREFULLY BEFORE INSTALLING,  
OPERATING OR SERVICING THIS EQUIPMENT.**

It is the responsibility of the employer to place this information in the hands of the operator. Keep for future reference.

### OPERATING PRECAUTIONS

Use ARO replacement parts to assure compatible pressure rating. Read all Warnings and Safety Instructions carefully before operation of this unit.

### RATIO ADJUSTMENT

The Aro multi-purpose hand operated oil pumps are designed so the ratio can be easily adjusted to handle any viscosity fluids.

The diagram in figure 2 illustrates the location of the linkage to obtain any one of the three different ratios.

The lower the ratio is set, the more volume of fluid will be dispensed with each stroke. However, the heavier the viscosity of the fluid, the higher the ratio should be and the volume per stroke will be reduced accordingly.

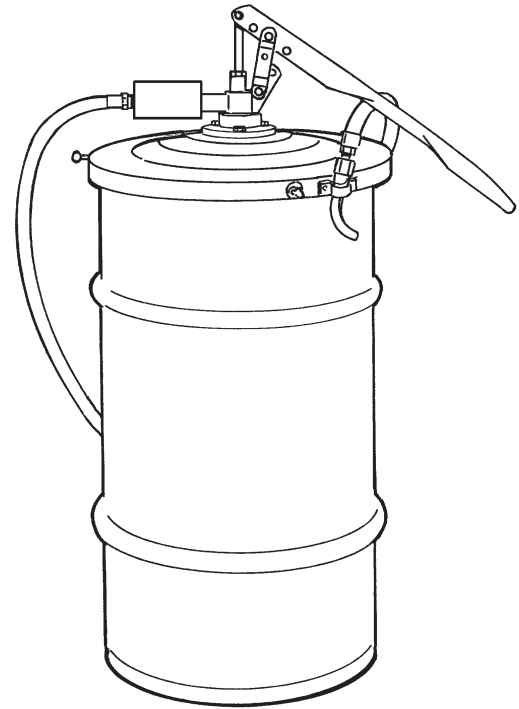
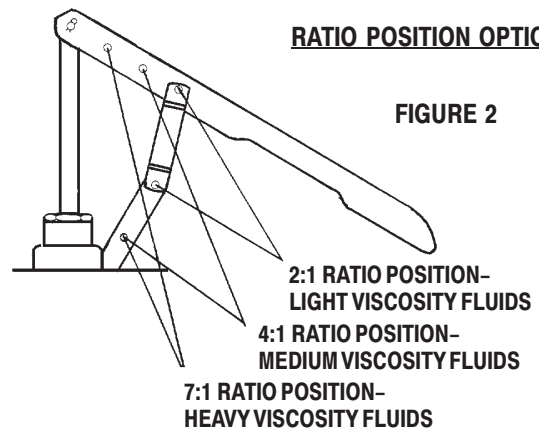


FIGURE 1



F002

## INSTALLATION

- Slip (24) cover assembly (where applicable) over (13) tube of pump and thread to (10) drum adapter.
- Remove the (2 and 3) pins, (1) retainer and (4) link assembly from the bag. Install the (5) hand lever onto the top of the (14) pump rod, using (2) link pin. Secure with (1) hair pin retainer. NOTE: Use the last hole in the (5) hand lever. The (4) link assembly attaches to the (8) pump body and the top end of the link assembly connects to the setting on the (5) hand lever (as shown in figures 2 and 3). NOTE: **Always install the link so that the arrow on the side points upward** (be sure the cross-pin in the link is "up" next to the handle). Other ratios may be had by assembling the link according to the number stamped on the (5) hand lever.
- Models 611019-1: Assemble (28) reducing bushing to the material outlet of the (8) pump body. Assemble (26) elbow to (28) bushing, securing with (27) nut. Assemble (25) cap and adapter assembly to (26) elbow.
- Models 611019-2, -3 and -5: Assemble (40) nipple to the material outlet of the (8) pump body. Assemble the (39) meter to the (40) nipple. Assemble the hose assembly to the (39) meter.
- Models 611019-4 and -6: Assemble the (48) nozzle assembly to the material outlet of the (8) pump body.

## TROUBLE SHOOTING

- If the pump fails to operate, the ratio setting may be too low for the material being pumped. If this is not the cause, check the (13) tube for damage or obstruction.
- If the pump operates, but dispenses little or no material, remove the (21) intake valve assembly and check for foreign matter, which may be holding the valve plate off the seat. Also, make sure the valve plate or seat is not bent or scored.
- If leakage occurs between the (14) pump rod and (6) packing gland, tighten the gland just enough to stop the leakage. Do not over-tighten, as this will cause excessive packing wear and harden pumping action.

## MAINTENANCE

Disassembly should be done on a clean work bench, with clean cloths to keep parts clean. Periodically flush the pump with a solvent that is compatible with the material being pumped. Caution should be used at all times to keep the material covered and free from contamination, which could damage the piston rod assembly.

## PARTS LIST

ITEM	DESCRIPTION (Size in Inches)	QTY	PART NO.
1	Hair Pin Retainer	(3)	72835
2	Link Pin	(1)	72833
3	Link Pin	(2)	72834
4	Link Assembly	(1)	72027
	Link & Pin Ass'y (includes items 1 - 4)	(1)	72062
5	Hand Lever	(1)	72001-1
6	Packing Gland	(1)	72058
7	Packing	(2)	72021
8	Pump Body	(1)	72012
9	Gasket	(1)	72056
10	Drum Adapter (2" n.p.t.)	(1)	71195
11	Nut (1/4" - 20)	(1)	Y12-4-C
12	Screw (1/4" - 20 x 1-1/2")	(1)	Y197-158-C
	Adapter Ass'y (includes items 10 - 12)	(1)	71092
13	Tube	(1)	72019-12
14	Pump Rod	(1)	72022-3
15	Spring	(1)	72018
16	Valve Plate	(1)	72042
17	Piston Body	(1)	72017
18	Seal Ring	(1)	72061
19	Lockwasher (3/8")	(1)	Y1-616-C
20	Nut (3/8" - 24)	(1)	Y11-106-C
21	Intake Valve Assembly	(1)	72046
22	Seal	(1)	70414
23	Screw (1/4" - 20 x 1") (not shown)	(3)	Y66-59-C
24	Cover Ass'y (includes items 22 and 23)	(1)	72096

ITEM	DESCRIPTION (Size in Inches)	QTY	PART NO.
25	Cap and Adapter Assembly	(1)	60430
26	Elbow	(1)	71442
27	Conduit Nut	(1)	71489
28	Reducing Bushing (1/2 n.p.t. x 3/8 n.p.t.)	(1)	Y45-106-C
29	Nozzle Assembly	(1)	60164
30	Hose Assembly (3/8" i.d.)	(1)	629533-3
	Hose Ass'y (includes items 29 and 30)	(1)	629244
31	Filter Cap	(1)	70996
32	Gasket	(1)	70989
33	Filter	(1)	70986
34	Spring	(1)	F51-44
35	Filter Housing	(1)	70997
36	Filter Assembly	(1)	635101
37	Hose Assembly (1/2" i.d.)	(1)	621512-7
38	Rubber Boot	(1)	74066
39	Digital Meter	(1)	635190-2
40	Nipple (1/2 n.p.t. x 1-1/8" long)	(1)	Y27-4-C
41	Hose Assembly (1/2" i.d.)	(1)	621512-5
42	Ball (7/16" o.d.)	(1)	Y16-14
43	Spring	(1)	2384
44	Nozzle Adapter	(1)	77836
45	Spring Retainer	(1)	2707
46	Nozzle	(1)	77835
47	Valve Assembly	(1)	61858
48	Nozzle Ass'y (includes items 41 - 47)	(1)	621502-5
49	Digital Meter	(1)	635190-1

# PARTS LIST

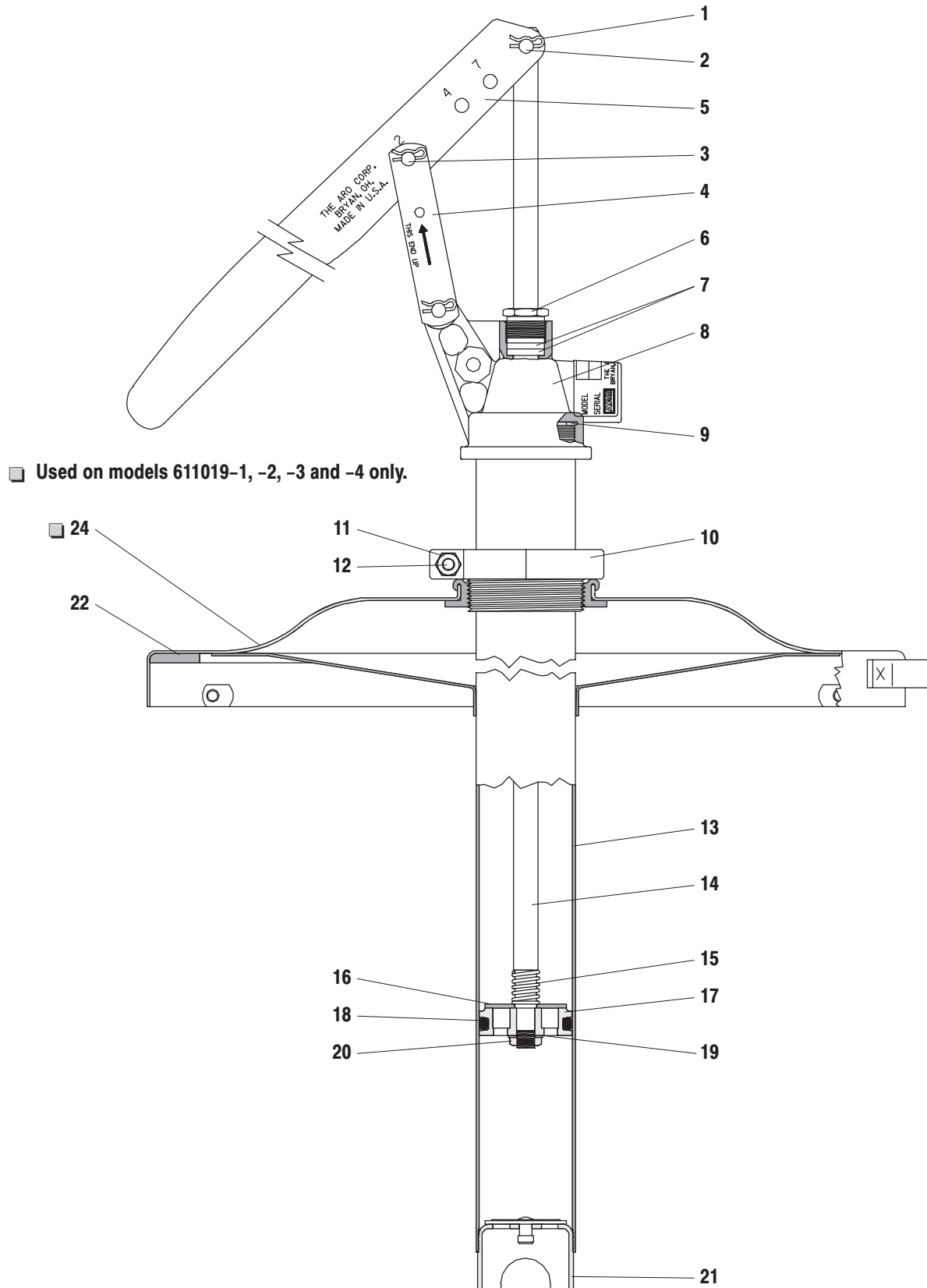
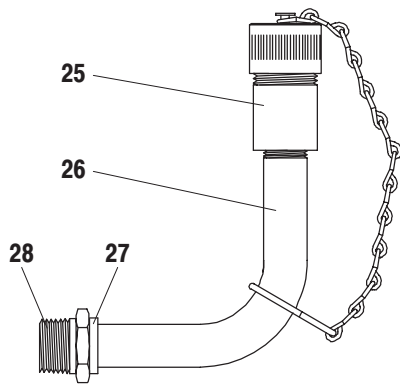
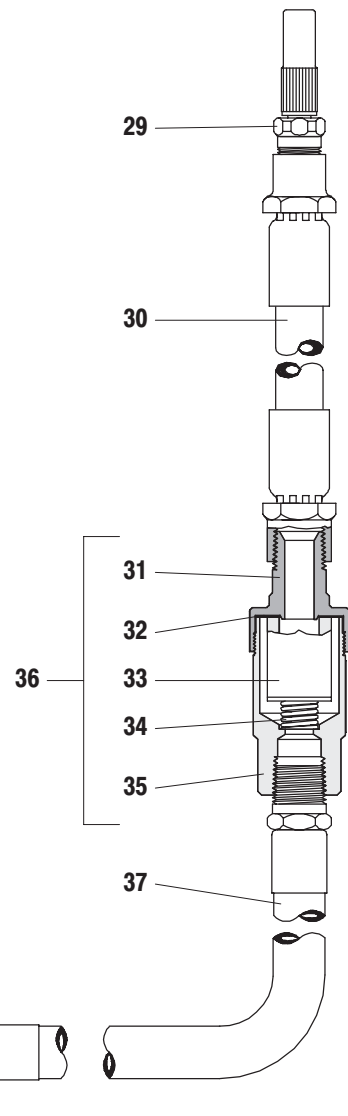


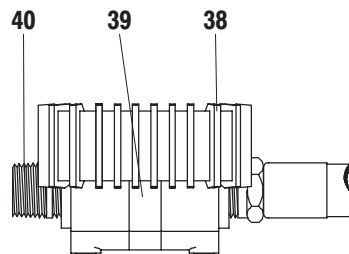
FIGURE 3



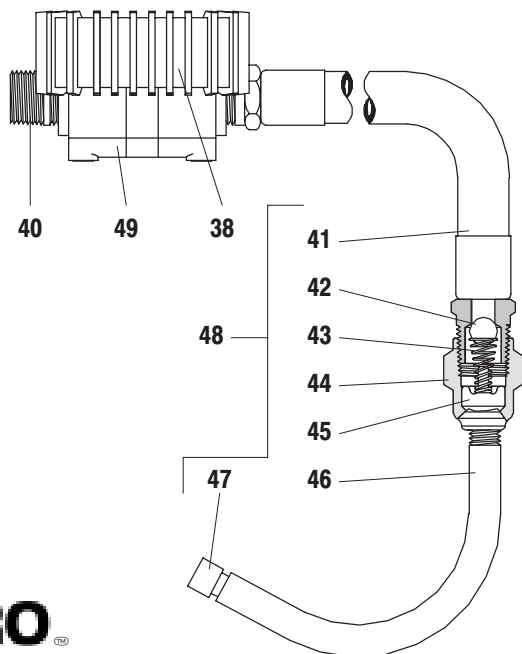
Used on models 611019-1



Used on models 611019-2



Used on models 611019-3 and 611019-5



Used on models 611019-4 and 611019-6

